

Serial Device Server SD-330AC Setup Guide



WA105490XA

Thank you for purchasing the Serial Device Server, SD-330AC. This Setup Guide provides information on how to configure and use SD-330AC.

Package Contents

The following items are included in the SD-330AC package.

- SD-330AC
- AC adaptor
- Rubber feet (4pcs)
- Warranty Booklet
- Setup Guide (this document)
- GPL license notice

Setup Procedure

The following is the procedure to setup SD-330AC.

Step1 Before You Begin

Prepare the items and information that will be necessary to configure SD-330AC.

Step2 Installation and Configuration

Install SD-330AC to your network and configure the network settings.

Step3 Link to Serial Device

Link to your serial device.

Step1 Before You Begin

1-1. Necessary Items

The following items are required in order to use SD-330AC.

Network Cable	Serial Cable	Wireless Setting Information																						
<p>Use to connect SD-330AC to a wired LAN.</p> <p>* Even if you wish to use SD-330AC on a wireless network, we recommend that you configure SD-330AC using a wired network, since configuration based on a wired network is much easier.</p> <p>* For a 100BASE-TX network, a network cable supporting 100BASE-TX (category 5 or above) is required.</p>	<p>Use to connect SD-330AC and your serial device. The serial port PIN assignment is shown on the right.</p> <p>Use the serial cable that comes with your serial device (the one you may have been using to connect the PC and serial device directly) or that is recommended in the operating manual of your serial device.</p> <table border="1"> <thead> <tr> <th colspan="2">PIN Assignment</th> </tr> <tr> <th>Pin</th> <th>Details</th> </tr> </thead> <tbody> <tr><td>1</td><td>DCD(Data Carrier Direct) Input</td></tr> <tr><td>2</td><td>RxD(Receive Data) Input</td></tr> <tr><td>3</td><td>TxD(Transmit Data) Output</td></tr> <tr><td>4</td><td>DTR(Data Terminal Ready) Output</td></tr> <tr><td>5</td><td>GND(Ground) Input</td></tr> <tr><td>6</td><td>DSR(Data Set Ready) Input</td></tr> <tr><td>7</td><td>RTS(Request To Send) Output</td></tr> <tr><td>8</td><td>CTS(Clear To Send) Input</td></tr> <tr><td>9</td><td>RI(Ring Indicate) Input</td></tr> </tbody> </table>	PIN Assignment		Pin	Details	1	DCD(Data Carrier Direct) Input	2	RxD(Receive Data) Input	3	TxD(Transmit Data) Output	4	DTR(Data Terminal Ready) Output	5	GND(Ground) Input	6	DSR(Data Set Ready) Input	7	RTS(Request To Send) Output	8	CTS(Clear To Send) Input	9	RI(Ring Indicate) Input	<p>Collect the wireless setting information such as SSID, encryption mode, encryption key, etc. of your wireless network.</p> <p>* If you will use SD-330AC in a wired network after finishing the configuration, you do not have to collect the wireless setting information.</p>
PIN Assignment																								
Pin	Details																							
1	DCD(Data Carrier Direct) Input																							
2	RxD(Receive Data) Input																							
3	TxD(Transmit Data) Output																							
4	DTR(Data Terminal Ready) Output																							
5	GND(Ground) Input																							
6	DSR(Data Set Ready) Input																							
7	RTS(Request To Send) Output																							
8	CTS(Clear To Send) Input																							
9	RI(Ring Indicate) Input																							

1-2. Download Necessary Utilities and Documents

The following explains how to download the necessary utilities and user's manual from Silex Technology's homepage.

1 Access the URL below from the computer you are using to configure the SD-330AC.

2 Go to the support page and select the product model.

Product Model	SD-330AC
---------------	----------

URL : <https://www.silextechnology.com/>

3 Download the utilities and user's manual below and extract them on your desktop.

User's Manual	SD-330AC User's Manual
---------------	------------------------

The following needs to be downloaded to the computer from which you configure SD-330AC.

Utility	Serial Device Server Setup
---------	----------------------------

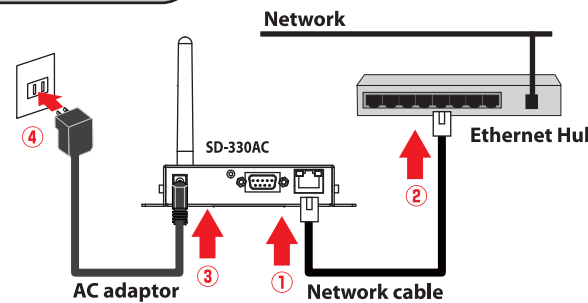
The following needs to be downloaded to the computer from which you use SD-330AC.

Utility	SX Virtual Link for Serial Device Server
Installation Guide	SX Virtual Link for Serial Device Server Installation

Step2 Installation and Configuration

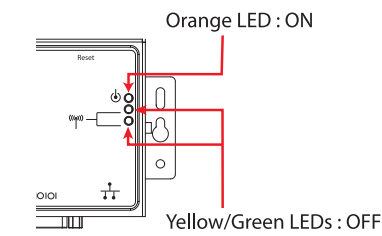
2-1. Install SD-330AC

1 Connect a network cable to SD-330AC and the other end to an Ethernet Hub. Connect an AC adaptor to SD-330AC and power plug to an outlet.



2

Check the LEDs on SD-330AC.
- Orange LED turns ON
- Green/Yellow LEDs turn OFF



2-2. Configure Network Settings

1

Open the folder "Serial Device Server Setup" you have downloaded and double-click Sdsetup.exe.

2

Click **Device Server Setup**.



3

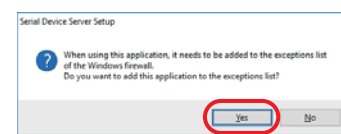
Click **Wired**.



* If the User Account Control screen is displayed, click **Yes** or **Continue**.

4

Click **Yes**.



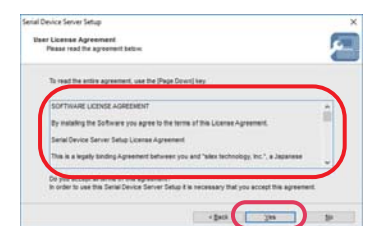
5

The Serial Device Server Setup screen is displayed. Click **Next**.



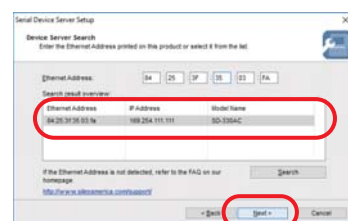
6

Read the SOFTWARE LICENSE AGREEMENT and click **Yes**.



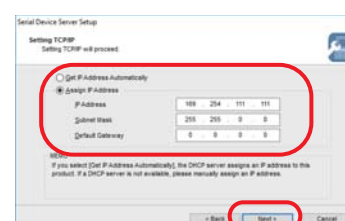
7

Select SD-330AC and click **Next**.



8

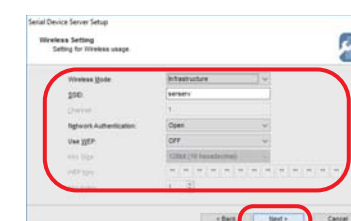
Select **Assign IP Address** and enter the IP address, subnet mask and default gateway. Click **Next**.



* When there is a DHCP server on your network and you wish to obtain an IP address automatically from it, select **Get IP Address Automatically** and click **Next**.
* When "Get IP Address Automatically" is not displayed in the window, enter the IP address (mandatory), subnet mask and default gateway.

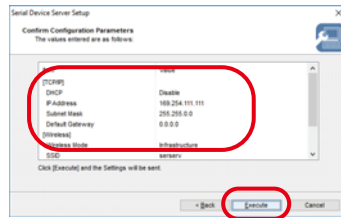
9

Configure the settings to use wireless LAN and click **Next**.

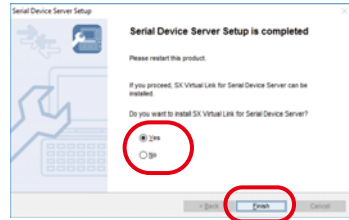


* This configuration is not necessary if you plan to use SD-330AC on a wired network. Click **Next** then.

10 Check the settings and click **Execute**.



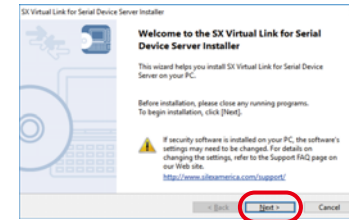
11 Select **Yes** and click **Finish**.



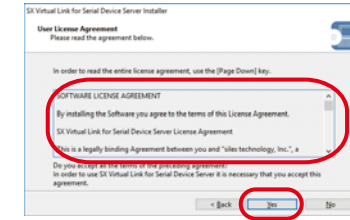
* If you do not want to install SX Virtual Link for Serial Device Server, select **No** and go on to **21**.

The following explains how to install SX Virtual Link for Serial Device Server. Follow the instructions on the screen to install it.

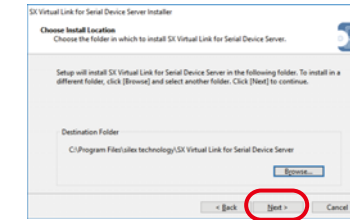
12 SX Virtual Link for Serial Device Server Installer wizard is displayed. Click **Next**.



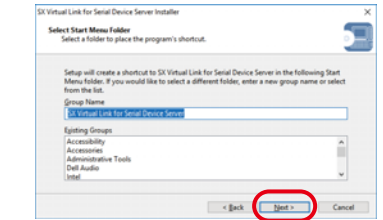
13 Read the **SOFTWARE LICENSE AGREEMENT** and click **Yes**.



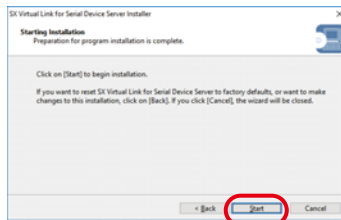
14 Select the folder to install into and click **Next**.



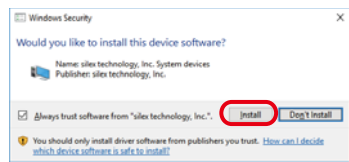
15 Enter the Group Name to be displayed in the Start Menu. Click **Next**.



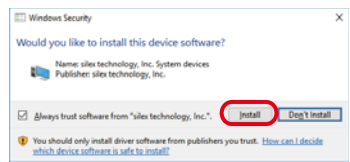
16 Click **Start** to start the installation.



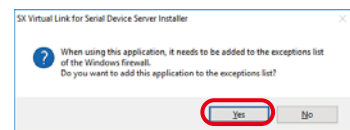
17 Windows Security message is displayed. Click **Install**.



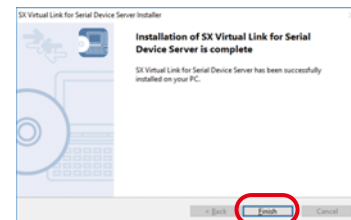
18 Click **Install**.



19 When the message below is displayed, click **Yes**.

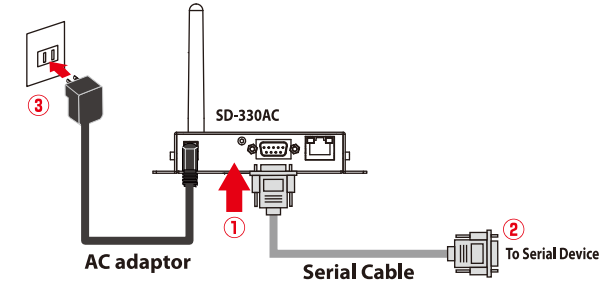


20 The completion screen is displayed. Click **Finish**.



21 Unplug the AC adaptor from the outlet to restart SD-330AC to take effect of these settings. If you will use SD-330AC over a wireless LAN, unplug the network cable.

22 Connect the serial device that you wish to share over the network to SD-330AC using a serial cable and plug the AC adaptor of SD-330AC into the outlet.



Step3 Link to Serial Device

The following explains how to link the serial device using SX Virtual Link for Serial Device Server (this method is called as "Serial Port Emulation Mode"). For other communication methods, see the SD-330AC User's Manual that you have downloaded at **Step1 Before You Begin**.

Install Necessary Utility to PC

Install SX Virtual Link for Serial Device Server if it is not yet installed to the PC from which you use SD-330AC. For how to download it, see **Step1 Before You Begin**. For how to install it, see **SX Virtual Link for Serial Device Server Installation** guide that you have downloaded.

3-1. Start SX Virtual Link for Serial Device Server

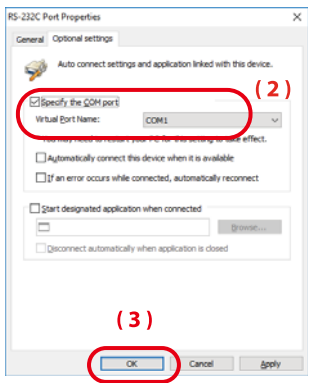
Click the icon in the task tray or click **Start - SX Virtual Link for Serial Device Server - SX Virtual Link for Serial Device Server**.

3-2. Link to Serial Device

* To specify the COM port manually, please complete the following steps before you link to the serial device.

(1) Select the serial device that you wish to link and click the **Properties** button.

(2) In the **Optional settings** tab, check **Specify the COM port** check box and select the COM port that you wish to use from **Virtual Port Name**. (Please do not select one that is already used on your system.)



(3) Click **OK**.

1 Select SD-330AC in SX Virtual Link for Serial Device Server's main window and click **Connect** button.



2 Once you successfully link to the serial device, the status icon is changed to "Connected" in the SX Virtual Link for Serial Device Server's main window. The COM port that you have selected is displayed in the status column.

3-3. Start Serial Communication Software

1 Start the serial communication software such as terminal software, etc.

2 On the serial communication software, select the COM port that is displayed in the status column of the SX Virtual Link for Serial Device Server's main window.

* Also, configure the serial port settings such as a baud rate, stop bit, etc. on serial communication software.

Once the communication settings are configured, you can communicate with the serial device connected to SD-330AC.

3-4. Unlink from Serial Device

1 Close the serial communication software.

2 Select SD-330AC in the SX Virtual Link for Serial Device Server's main window and click **Disconnect** button.

Customer Support

USA : silex technology america, Inc.
 E-mail : support@silexamerica.com
 URL : https://www.silextechnology.com/
 Phone : +1-657-218-5199

Europe : silex technology europe GmbH
 E-mail : support@silexeurope.com
 URL : https://www.silextechnology.com/
 Phone : +49-2154-88967-0