



**UBox 2100 & UBox 4100**



**UBox™ 2100 & UBox 4100  
Quick Start Guide**



**UBox 2100 & UBox 4100**

## UBox 2100 & UBox 4100 QUICK START GUIDE CONTENTS

|                                 |      |
|---------------------------------|------|
| What's in the Box .....         | 2    |
| Getting Started .....           | 3-5  |
| Connecting the USB Device ..... | 6-11 |
| Configuring the UBox .....      | 12   |
| Contact Information .....       | 13   |

### WHAT'S IN THE BOX

The package includes:

- Lantronix UBox USB Device Server
- Power Supply
- Quick Start Guide
- CD with software and User Guide

The Lantronix UBox USB Device Server makes it possible for computers on a Local Area Network (LAN) to connect and share USB devices such as printers, scanners, and storage drives. This Quick Start will get you up and running with your new UBox. For more detailed instructions, please refer to the UBox USB Device Server User Guide on the product CD or the Lantronix web site.

### GETTING STARTED

#### STEP 1: INSTALL THE HARDWARE

1. Connect the UBox to your network using an RJ45 Ethernet cable.
2. Connect the power supply included in the package to the UBox.

You should now see lights on your UBox. When the left-most (green) SYSTEM light starts blinking slowly (once every 3 seconds), you are ready to install the UBox software.

If you do not see the left-most green SYSTEM light (UBox4100) or SYSTEM 4 LED (UBox 2100) blinking slowly, please read the detailed troubleshooting instructions in the User Guide.

**Note:** Do not connect USB Devices to the UBox until after UBox hardware and software have been installed.

UBox 2100



UBox 4100



## GETTING STARTED CONTINUED...

### STEP 2: INSTALL THE SOFTWARE

Requirements: Windows 2000/XP or later

The following procedure summarizes the steps for installing the UBox software. 1. Insert the product CD into your CD drive. The CD should start automatically.

If the CD does not launch automatically:

- Open **My Computer**.
- Click on the **CD Drive Letter**.
- Double-click **Launch.exe**.

- Click the UBox Software **Installation** button to install the application.
- Follow the on-screen instructions.

**Note:** During or after the software installation, the Windows New Hardware Wizard may ask you to install software several times. Select **Install the software automatically**. If you see an additional prompt regarding logo testing, click **Continue Anyway** to proceed. The UBox application opens automatically once the installation is complete.

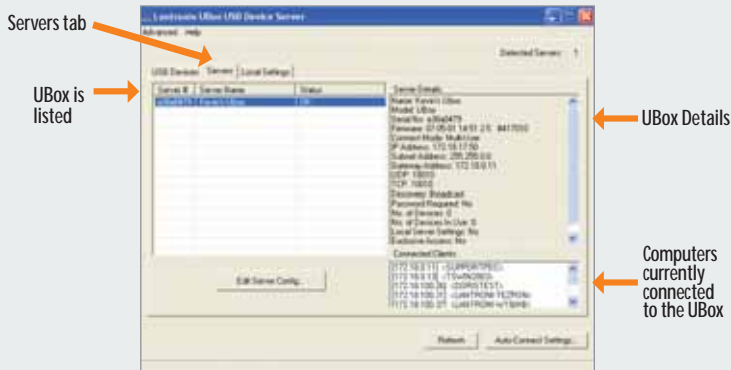
- To verify that the application sees the UBox Device Server, click the **Servers** tab.

**Note:** Initially, the UBox displays as **Unnamed**. During configuration, you can assign a name to it.

## GETTING STARTED CONTINUED

If the software does not see the UBox hardware, please see the Users Guide on the CD for more detailed troubleshooting information.

**Note:** If you want additional users to connect to your UBox, you need to install the UBox software on each client computer.



## CONNECTING THE USB DEVICE

1. Connect your USB device to any USB port on the Lantronix UBox.

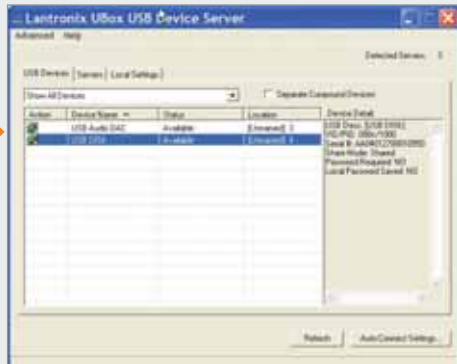


Above each USB port is a green LED light. This light indicates whether your USB device is supported in the current software/firmware. A solid green light indicates that your device is supported. A slowly blinking light indicates that your USB device is not currently supported. Please contact Lantronix if you have a slowly blinking light.

## CONNECTING THE USB DEVICE CONTINUED

2. On the **Start** menu, click **Programs**→**Lantronix UBox USB Device Server**→**UBox USB Device Server**. The **USB Devices** tab of the Lantronix UBox USB Device Server window opens. Your networked USB device displays in the **Device Name** column.

USB Device  
attached to  
the UBox




### Notes:

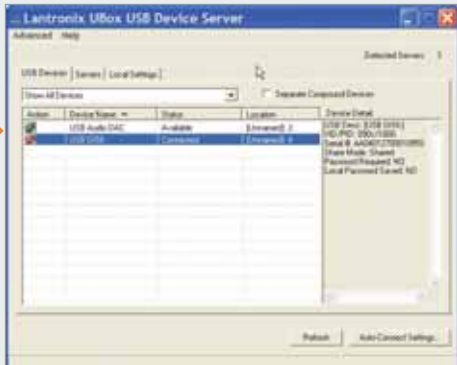
- If you do not see your USB device, please read the detailed troubleshooting instructions in the User Guide.
- If you have installed a software or hardware firewall, you may need to configure it to allow access to your UBox. Please refer to the User Guide for details.

## CONNECTING/DISCONNECTING VIA SOFTWARE


Now that the USB Device is physically connected, you must connect to it through the UBox software.

1. Click the **USB Devices** tab.
2. Select your device by clicking its name.
3. Click the **Connect** icon  in the **Action** column to the left of the device.  
You can now use your device as if it were directly connected to your computer.

USB  
Connected  
to the UBox



## CONNECTING/DISCONNECTING CONTINUED...


4. When you are finished using your USB device, select the device and click the **Disconnect** icon  in the **Action** column. This makes the USB device available to other UBox users.
5. Repeat this procedure for additional USB devices.

### Shortcut: Connect and Disconnect USB Devices Without Opening the Software


Connect and disconnect USB devices without opening the UBox software by using the UBox System Tray.

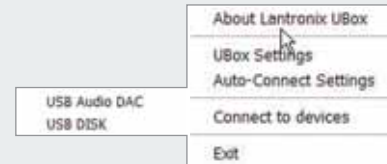
## CONNECTING/DISCONNECTING CONTINUED...

### To use the system tray:

1. Find the **UBox** icon  on the **System Tray**. The System Tray is in the lower right corner of your screen (next to the time).



2. Right-click the **UBox** icon . A menu displays.



4. Select the device you want to connect or disconnect.

**Note:** You can use the system tray for other purposes. For example, to open the UBox application instead of using the **Start** menu, right-click the system tray and select **UBox Settings**.

## CONFIGURING THE UBOX

The UBox package has two components: the UBox hardware and the UBox software. Both have their own settings and configuration options. You modify the settings for the UBox on the **Servers** tab; these settings are stored in the UBox hardware. You modify the settings of the UBox software on the **Local Settings** tab; these settings are stored on your computer.

Refer to the User Guide for details on configuring the UBox hardware and software.

## CONTACT

For questions and technical support, please check our online knowledge base at [www.lantronix.com/support](http://www.lantronix.com/support)

Lantronix  
15353 Barranca Parkway, Irvine, CA 92618, USA  
Phone:(949) 453-3990 or Fax: (949) 453-3995  
[www.lantronix.com](http://www.lantronix.com)