

DS-520AN

High-Speed Wireless USB Device Server With Enterprise Security (802.1X authentication)



Easily Connect and Share USB devices on a Wireless Network

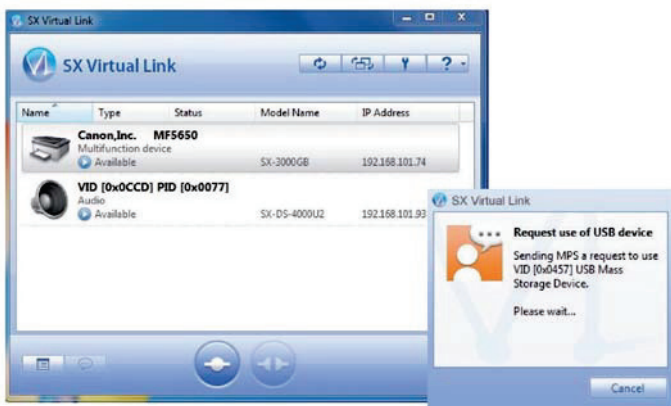
The use of mobile terminals in the office is continually increasing. At the same time, scanners, multifunctional printers, dongles, meters and readers and USB hard disks frequently do not yet have a wireless interface. The DS-520AN Wireless USB Device Server replaces the USB cable with a radio or LAN connection and simultaneously avoids the restrictions of USB cables (max. 5 metres in length). This means that devices can be flexibly connected in any location. Furthermore, USB Device Servers allow devices to be used by several people in sequence via the wireless network, which reduces procurement costs for IT infrastructure and contributes to their full utilisation.

USB Device Server

A USB Device Server is a network adapter that uses Silex USB Virtual Link Technology® to make USB devices network compatible. Practically every USB device type that you can think of can thus be used in and over the network, exactly as if they were directly connected to the computer via a USB cable. Existing software and drivers can continue to be used unchanged.

SX Virtual Link

SX Virtual Link is an app for Silex USB Virtual Link Technology®, which allows the user to manage the virtual connection status.



- Make or break the connection between the computer and the USB devices connected to the device server.
- Send use requests if the device is already occupied by another user.

Functions

1 Enterprise Security

Security for professional use that takes IT security beyond standard encryption and which can be relied on by business users:

- Open
- WEP (64bit/128bit)
- WPA/WPA2-PSK (AUTO)
- WPA2-PSK (AES)
- WPA/WPA2-EAP (AUTO)
- WPA2-EAP (AES)
- IEEE 802.1X (EAP-TLS/EAP-TTLS/PEAP/EAP-FAST/LEAP)

2 Isochronous data-transfer mode

Devices such as industrial USB cameras (full- and high-speed) and audio devices such as loudspeakers that require continuous and almost real-time data transfer can also be used in a wireless network environment.*

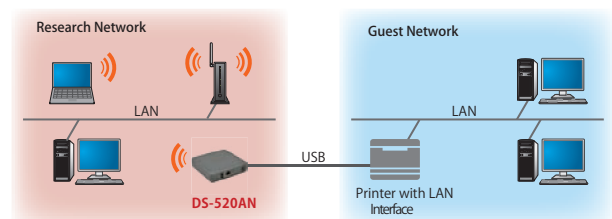
*The use of isochronous USB devices is very complex and not every device can be used in the wireless network. Compatibility validation is urgently recommended.

3 Wireless printserver

The DS-520AN can be used as a wireless print server. The "RAW" and "LPR" network print protocols are supported. Furthermore, printers with fitted LAN cards can have a extra WLAN interface added. This allows the printer to be used by several people, even from different network segments.

Example:

Printer can be used from separate network segments (e.g. research / open guest network) thanks to additional interface.



This example shows the use of the DS-520AN as a wireless resource. The DS-520AN can also be used as a second LAN interface (wired). It is not possible to simultaneously use it as a WLAN and LAN print server.

sESS(silex Embedded Software Suite)

The USB Device Server connection functions, as in SX Virtual Link, can also be provided by Silex as SDK client software. In this way, the functions can be integrated in client's own applications. In addition to the Windows SDK, there is also an iOS and an Android SDK available so that the USB device server can also be used from smartphones and tablet computers.

※ The Windows version of the SDK can be downloaded free of charge from Silex' website. For the other versions, please contact the Silex Sales Team.

Other USB Device Server

Basic Model USB 2.0 Device Server



DS-510

- 10BASE-T, 100BASE-TX, 1000BASE-T (auto-detection)
- USB2.0(Type-A) x 2 Port
- Isochronous data-transfer mode

High-End Model USB 3.0 Device Server with Enterprise-Security



DS-600

- 10BASE-T, 100BASE-TX, 1000BASE-T (auto-detection)
- USB 3.0 (Typ-A) x 1 Port, USB 2.0 (Typ-A) x 1 Port
- Isochronous data-transfer mode
- Security: Authentication with IEEE802.1X

USB Device Server comparison

Product name	DS-520AN	DS-510	DS-600
Wired LAN	10BASE-T/100BASE-TX/1000BASE-T		
WLAN	○ (IEEE 802.11 a/b/g/n)	×	×
Device Server feature	USB2.0	USB2.0	USB3.0 / USB2.0
Isosynchronous data-transfer	○ (Full-Speed / Hi-Speed)		
Autom. printer connect.	○	○	○
IEEE 802.1X	○ (EAP-TLS, PEAP, EAP-TTLS, LEAP, EAP-FAST)	×	○ (EAP-TLS, PEAP, EAP-TTLS)
NAS feature	×	×	○ (FAT12, FAT16, FAT32)
LAN Data encryption	×	×	○ (AES256bit)
USB Password feature	×	×	○
Print Server feature	○	○	○
ECO-Mode feature	○	○	○

Specifications

Product Name	DS-520AN
LAN	
Interface	RJ-45 x 1 Port
Speed	10BASE-T/100BASE-TX/1000BASE-T (auto-detection)
WLAN	
Standards	IEEE 802.11a/b/g/n 2Tx2R
Encryption	Open, WEP(64bit/128bit), WPA2-PSK(AES), WPA/WPA2-PSK (Auto), WPA2-EAP(AES), WPA/WPA2-EAP(Auto), 802.1x (EAP-TLS/EAP-TTLS/PEAP/LEAP/EAP-FAST) ※ WPA-PSK(AES/TKIP), WPA-Enterprise(AES/TKIP), WPA/WPA2-PSK (Auto), WPA/WPA2-EAP(Auto)
Channels	2.4GHz : 1~13ch 5GHz : 36~64ch, 100~140ch
Modul	Integrated 2.4GHz/5GHz WLAN Modul
Smart-Wireless-Setup	Push-Button-Method, PIN-Method
Device Interface	
Buttons	factory default settings, Smart-Wireless-Setup
Device Interface	Hi-Speed (TypA) x 1Port
Software	
Operating Systems Supported	Windows 10 (32/64bit), Windows 8/8.1 (32/64bit), Windows 7 (32/64bit), Windows Server 2012R2, Windows Server 2012, Windows Server 2008R2, Windows Server 2008 (32/64bit), Mac OS X (PowerPC : Ver 10.3.x~Ver 10.5.x, Intel : Ver 10.4.4~Ver 10.10.x)
Protocols Supported	TCP/IP
Configuration	Device Server Setup, Web Browser
Dimensions	W:100mm x D:100mm x H:25.5mm
Weight	118g
Environment	Usage : Temperature : -10~50°C Humidity : 20~95%RH (non condensing) Storage : Temperature : 0 ~ 40°C Humidity : 20 ~ 95%RH (non condensing)
Power Supply	5.5W (DC5V 1.1A) without USB power*
Regulatory Compliance	VCCI Class B / FCC Class B / ICES-003 Class B / CE Class B, Rohs
Software	SX Virtual Link (Windows) Ver4.0.1 or higher SX Virtual Link (Macintosh) Ver3.17.0 or higher
Enclosed Accessories	Device, AC Adapter, Setup Guide, GPL-License, Guarantee information
EAN Code	4944406005411
Part Number EU/UK model	E1390

* Supply currents of bus power for USB 2.0: 500mA
To operate a USB device that comes with an AC adapter, it is recommended to use the enclosed AC adapter for a stable performance.

About Silex

Silex Technology builds on more than 40 years of hardware and software connectivity know-how and IP, custom design development experience, and in-house manufacturing capabilities, bringing value to customers with a foundation of technical expertise. With relentless attention to quality, exclusive access to Qualcomm Atheros expertise, and strategic partnerships with leading semiconductor providers, Silex Technology is the global leader in reliable Wi-Fi connectivity for products ranging from a medical device to a document imaging product to a video on digital display.

Besides embedded Wi-Fi components and services for OEM customers, Silex Technology also develops, manufactures and markets Wi-Fi and LAN-connectivity end-products for business and enterprise users, ranging from USB and Serial Device Servers, Wireless Infrastructure Devices to Display Connectivity Solutions.

With Silex Technology, customers get a single vendor that provides hardware and software support from design through manufacturing for successful product after successful product. For more information, please visit www.silexeurope.com.

silex technology is a registered trademark of silex technology, Inc. Other product or brand names may be registered trademarks or trademarks of their respective owners. Technical information and specifications are subject to change without notice. © silex technology, Inc. All rights reserved.



Europe
silex technology europe GmbH
+49-2151-65009-10
Toll-free hotline in Germany:
0800-7453938
www.silexeurope.com
> contact@silexeurope.com

Japan
silex technology, Inc.
+81-774-98-3782
www.silex.jp
> support@silex.jp

USA
silex technology america, Inc.
+1-801-747-0656
Kostenfreie Hotline USA:
866-765-8761
www.silexamerica.com
> contact@silexamerica.com

China
silex technology beijing, Inc.
+86-10-8497-1430
www.silex.com.cn
> contact@silex.com.cn



ISO 9001
JQA-QMA2667
silex technology, Inc.



ISO 14001
JQA-EM3813
silex technology, Inc.
Design & Manufacturing Center