

PCI 4S
PCI4S1P
PCI 6S

PCI Multi I/O Card

User Manual

Ver. 1.10

All brand names and trademarks are properties of their respective owners.

Introduction:

Serial Port and Parallel Port have long been the most popular interfaces in the history of computer. They are widely adopted by most peripheral devices. However, as most motherboards have two serial ports and one parallel port only, it may not be enough for some special applications. Our PCI Multi I/O Card will certainly help you out. It is easy to use and very reliable. Try it our now!

Features

- Compliant to PCI Bus Rev 2.2
- Support Plug and Play for I/O address and Interrupt
- Compatible with 16C550
- Support SPP/EPP/ECP (for PCI 4S1P only)
- Serial Port speed up to 115.2Kb/sec
- Parallel Port speed up to 1.5MBytes/sec
- PCI 4S Card has 1x DB25M and 3x DB9M
- PCI 4S1P Card has 1x DB25M, 3x DB9M and 1x DB25F
- PCI 6S Card has 1x DB25M and 5x DB9M
- Support DOS, Windows 95b, 98, ME, 2000, NT, XP, Linux

Connector and Jumper Settings

JP8:COM A, change the DB9M to DB25M with an optional cable

JP3:COM B, change the DB25M to DB9M with an optional cable

JP4: COM C, connect to DB9M cable

JP5: COM D, connect to DB9M cable

JP10: COM E, connect to DB9M cable (PCI 6S only)

JP11: COM F, connect to DB9M cable (PCI 6S only)

JP1: connect to DB25F cable (PCI 4S1P only)

Notice: Port COM A&B only support to 115.2, Port COM C-F can support to 460.8 Kbps depend on the jumper setting for J1.

J1: select clock input

Short 1-2, PC UART clock for 115.2Kb/sec data rate (default)

Short 3-4, PC UART clock for 230.4Kb/sec data rate

Short 5-6, UART clock for 460.8Kb/sec data rate

Driver Installation

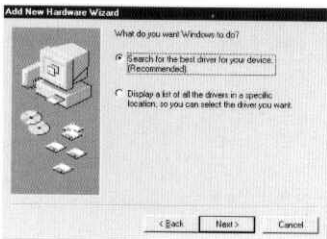
Windows 98/98SE

Once the PCI Multi I/O Card is installed and the computer is turned on, Windows will detect the board and attempt to install driver for it.

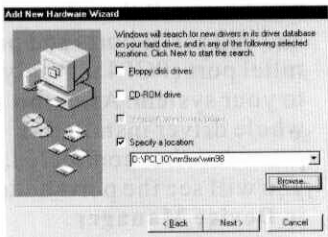
1. Windows will detect a new hardware *PCI Serial Controller*. Click **Next**.



2. Select *Search for the best driver for your device*. Click **Next**.



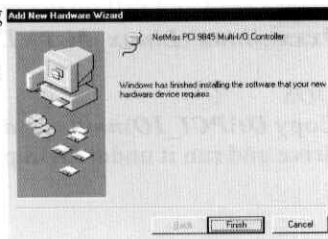
3. Insert the bundled Driver CD in your CD-ROM drive. Then type the location of the driver as `D:\PCI_IO\nm9xxx\WIN98`. Click **Next**.



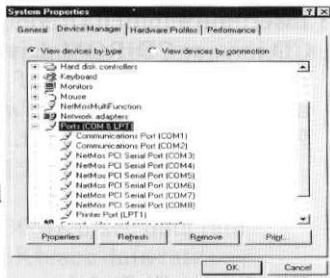
4. Windows will find the new hardware *NetMos PCI Multi-I/O Controller*. Click **Next**.



5. Windows will start copying driver files from the CD. After copying, click **Finish** to continue.



6. Windows will then detect and add serial ports and parallel port (PCI 4SIP only) to your system. After the whole driver installation procedure has completed, you will see the ports added in **Device Manager**.



Windows 95, Windows ME, Windows 2000 & Windows XP Undergo normal driver installation procedure similar to above.

Windows NT

Run **setup.exe** in the folder **D:\PCI_IO\nm9xxx\winnt**.

Linux

Please read and follow the instructions in **D:\PCI_IO\nm9xxx\linux\Linux_M.TXT**.

DOS

Copy **D:\PCI_IO\nm9xxx\dos\NmDosIn.exe** to your hard drive and run it under DOS prompt.

